

# COMPANY PROFILE

## HEADQUARTER IN PARIS

SEIRIS S.A.S,  
Z.I Panhard, Chemin de la Julienne,  
91830 Le Coudray-Montceaux, France  
Tel : +33.1.69.01.20.39  
Fax : +33.1.69.01.33.33  
E-mail : [info@seiris-sa.com](mailto:info@seiris-sa.com)  
Website : [www.seiris-sa.com](http://www.seiris-sa.com)



## OUR STORY

---

Creation in 1978 : we have more than 40 years designing, manufacturing and installing expansion joints, flexible connections for piping and ducting systems.

We serving any type of heavy industry with our wide range of FABRIC, METAL and RUBBER EXPANSION JOINTS (coal, gas, biomass fired power plants, hydro power plants, water desalination plants, cement plants, steel plants, chemical and petrochemical plants, sugar plants)

SEIRIS works in close collaboration with the most famous EPC companies (Engineering Procurement Construction), OEMs (Original Equipment Manufacturers), end users.

Operating internationally, we are present in Europe, USA, Central America, Middle East North Africa (MENA), India and South East Asia. Our expansion joints are installed worldwide!

Our Clients from these very different industries are our most valuable R&D experts. With their help we keep on developing the most suitable solutions for the most different and critical applications.

We have production facilities in Paris (France), Sousse (Tunisia), Hyderabad (India), Izmir (Turkey).

Tailor Made fabrications according to Dimensions, Shapes and Operating Conditions of our client's most critical applications.

We manufacturing and testing our products according to internationally recognized standards (E.S.A, F.S.A, E.J.M.A, ASME, AD MERKBLATTER, ASTM, ABS...)

More than simple products, SEIRIS is offering turnkey solutions from the design to the installation of these expansion joints :

- Inspection
- On site measurements
- Expansion joints inventory
- Installation Supervision
- Installation
- Training
- Seminars...

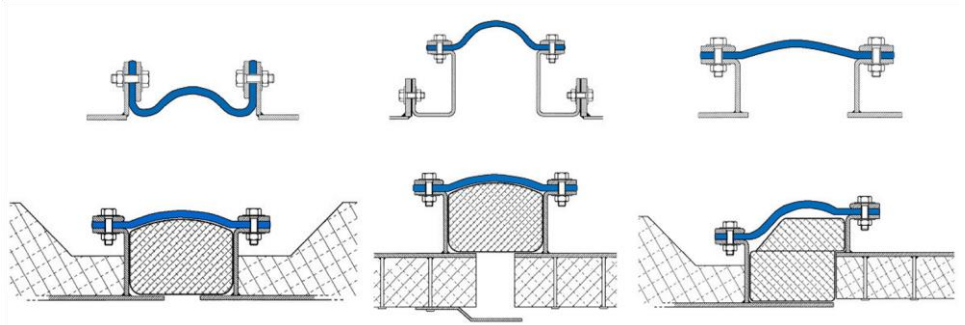
Our Team is ready to serve you any time !



# OUR PRODUCTS

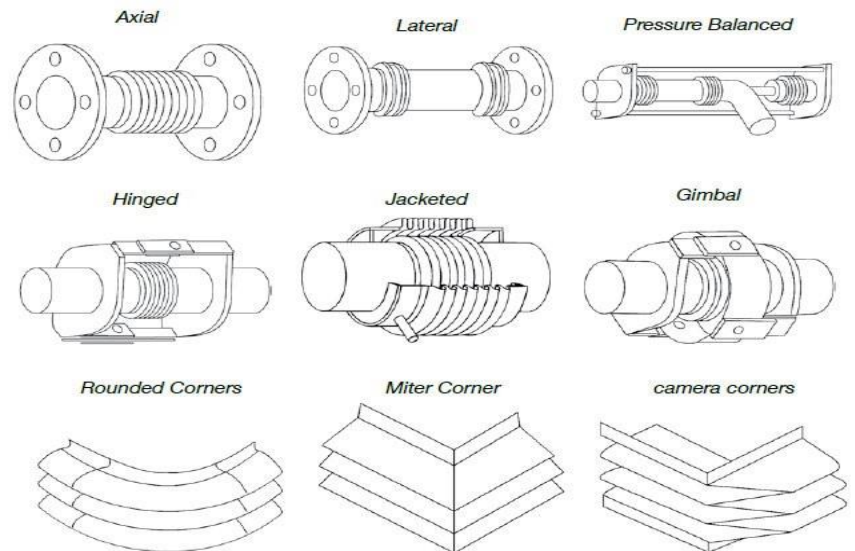
## FABRIC EXPANSION JOINTS

Single Layer or Multiple Layers  
 U-Type or Belt Type configuration  
 With or without Bolster (insulation)  
 With or without steel frame  
 Materials : Technical textiles  
 Temperature : up to 1 200 °C  
 Pressure : up to 0,25 bar



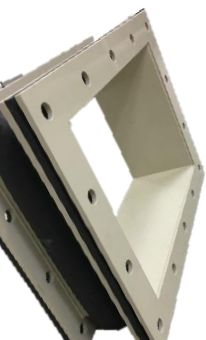
## METALLIC EXPANSION JOINTS

Single ply or Multiple plies  
 Single convolution or Multiple convolutions  
 To be welded or flanged Type configuration  
 Materials: Carbon steels,  
 Austenitic stainless steels,  
 Nickel Alloys ...  
 Temperature: up to 1200 °C  
 Pressure: up to 120 bars



## RUBBER EXPANSION JOINTS

Single ply or Multiple plies  
 Single convolution or Multiple convolutions  
 Swivel or Integrated flanges Type configuration  
 Materials: Wide range of rubbers  
 Temperature: up to 200 °C  
 Pressure: up to 25 bars



# PICTURES OF EXPANSION JOINTS

---

## FABRIC EXPANSION JOINTS



## METALLIC EXPANSION JOINTS



## COMPENSATEURS CAOUTCHOUC



## OUR REFERENCES

---



Follow us on our social networks

